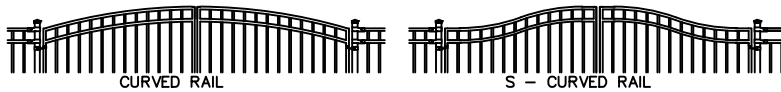


GATE TOP OPTIONS



SPECIFICATIONS:

POSTS: GALVALUME™ COLD FORMED STEEL TUBING
& PICKETS COATED INTERIOR & EXTERIOR

RAILS: ZAM™ COATED COLD FORMED TUBING
(Zinc, Aluminum, Magnesium)
COATED INTERIOR & EXTERIOR

FINISH: CHROMATE CONVERSION COATING
ELECTROSTATICALLY APPLIED THERMALLY
BONDED POLYESTER POWDER COATING
MINIMUM FILM THICKNESS 2.5 mils

POSTS: 51mm x 51mm (2"x2"), 14 OR 16GA.

POST CAPS: PYRAMID, BALL, SPIRE OR ACORN

RAILS: 25mm x 25mm (1" x 1"), 14GA.

UPRIGHTS: 25mm x 25mm (1" x 1"), 16GA

PICKETS: 16mm x 16mm (5/8" x 5/8"), 18GA.

WELDS: STAINLESS STEEL

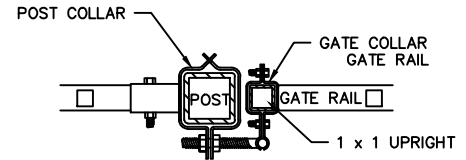
COLOUR: STANDARD COLOURS ARE BLACK, SEMI-BLACK
BROWN, GREEN, WHITE AND FOREST GREEN
(CUSTOM COLOURS AVAILABLE UPON REQUEST)

AVAILABLE GATE HEIGHTS:

762mm	(30")
914mm	(36")
1067mm	(42")
1219mm	(48")
1524mm	(60")
1829mm	(72")

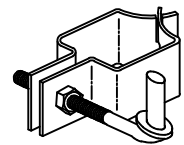
SHOWN

SECTION A-A

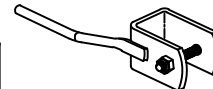


FITTINGS

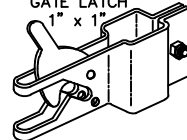
POST COLLAR c/w
1/2"x3" HINGE BOLT



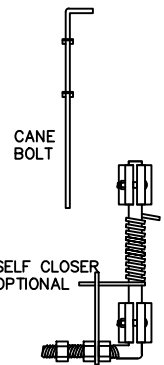
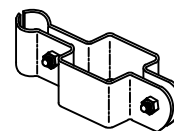
GATE FINGER
1" x 1"



GATE LATCH
1" x 1"



GATE COLLAR
1" x 1"



COMMENTS: DOUBLE SWING GATE



TITLE

IRON EAGLE I
STYLE 2110 DOUBLE SWING GATE

DRAWING No.

2110-DG

CHK'D

DATE: JAN 12, 2018