

SPECIFICATIONS:

**POSTS: GALVALUME™ COLD FORMED STEEL TUBING
& PICKETS COATED INTERIOR & EXTERIOR**

**RAILS: ZAM™ COATED COLD FORMED TUBING
(Zinc, Aluminum, Magnesium)
COATED INTERIOR & EXTERIOR**

**FINISH: CHROMATE CONVERSION COATING
ELECTROSTATICALLY APPLIED THERMALLY
BONDED POLYESTER POWDER COATING
MINIMUM FILM THICKNESS 2.5 mils**

POSTS: 51mm x 51mm (2"x2"), 14 OR 16GA.

POST CAPS: PYRAMID, BALL, SPIRE OR ACORN

RAILS: 25mm x 25mm (1" x 1"), 14GA.

UPRIGHTS: 25mm x 25mm (1" x 1"), 16GA

**PICKETS: 16mm x 16mm (5/8" x 5/8"), 18GA.
PINCHED ARROW, MAPLE LEAF, FLEUR DE LIS
OR FLAT TOP c/w UV INSERT
(USE ARROW UNLESS OTHERWISE NOTED)**

WELDS: STAINLESS STEEL

**COLOUR: STANDARD COLOURS ARE BLACK, SEMI-BLACK
BROWN, GREEN, WHITE AND FOREST GREEN
(CUSTOM COLOURS AVAILABLE UPON REQUEST)**

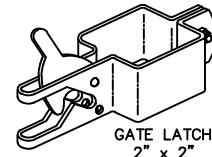
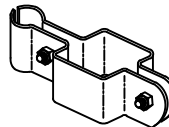
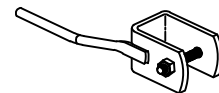
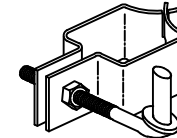
AVAILABLE GATE HEIGHTS:

991mm (39")
1295mm (51")
1600mm (63") SHOWN
1905mm (75")

FITTINGS

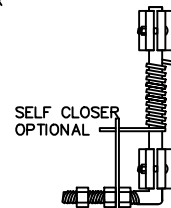
POST COLLAR c/w
1/2"x3" HINGE BOLT

GATE FINGER
1" x 1"

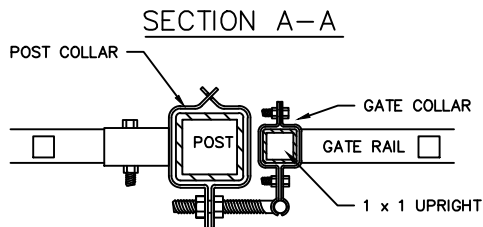


GATE COLLAR
1" x 1"

GATE LATCH
2" x 2"



SELF CLOSER
OPTIONAL



COMMENTS: SINGLE SWING GATE



TITLE

**IRON EAGLE I
STYLE 2600 SINGLE SWING GATE**

DRAWING No.

2600-SG

CHK'D

DATE: JAN 12, 2018