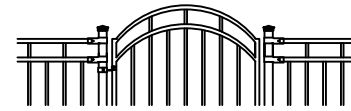


GATE TOP OPTIONS



CURVED RAIL



S-CURVE RAIL

SPECIFICATIONS:

POSTS: GALVALUME™ COLD FORMED STEEL TUBING & PICKETS
COATED INTERIOR & EXTERIOR

RAILS: ZAM™ COATED COLD FORMED TUBING
(Zinc, Aluminum, Magnesium)
COATED INTERIOR & EXTERIOR

FINISH: CHROMATE CONVERSION COATING
ELECTROSTATICALLY APPLIED THERMALLY
BONDED POLYESTER POWDER COATING
MINIMUM FILM THICKNESS 2.5 mils

POSTS: 51mm x 51mm (2"x2"), 14 OR 16GA.

POST CAPS: PYRAMID, BALL, SPIRE OR ACORN

RAILS: 25mm x 25mm (1" x 1"), 14GA.

UPRIGHTS: 25mm x 25mm (1" x 1"), 16GA

PICKETS: 16mm x 16mm (5/8" x 5/8"), 18GA.

WELDS: STAINLESS STEEL

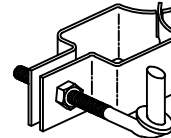
COLOUR: STANDARD COLOURS ARE BLACK, SEMI-BLACK
BROWN, GREEN, WHITE AND FOREST GREEN
(CUSTOM COLOURS AVAILABLE UPON REQUEST)

AVAILABLE GATE HEIGHTS:

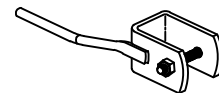
- 762mm (30")
- 914mm (36")
- 1067mm (42")
- 1219mm (48")
- 1524mm (60") SHOWN
- 1829mm (72")

FITTINGS

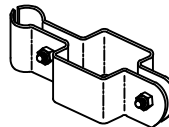
POST COLLAR c/w
1/2"x3" HINGE BOLT



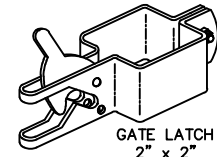
GATE FINGER
1" x 1"



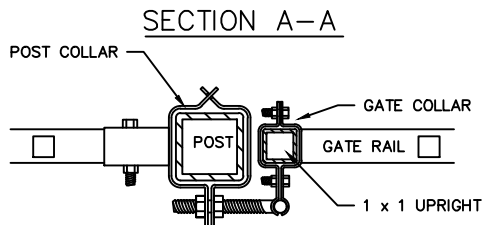
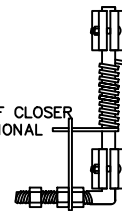
GATE COLLAR
1" x 1"



GATE LATCH
2" x 2"



SELF CLOSER
OPTIONAL



COMMENTS: SINGLE SWING GATE



TITLE

IRON EAGLE I
STYLE 2115 SINGLE SWING GATE

DRAWING No.

2115-SG

CHK'D

DATE: JAN 12, 2018