

SPECIFICATIONS:

POSTS: GALVALUME™ COLD FORMED STEEL TUBING & PICKETS COATED INTERIOR & EXTERIOR

RAILS: ZAM™ COATED COLD FORMED TUBING (Zinc, Aluminum, Magnesium) COATED INTERIOR & EXTERIOR

FINISH: CHROMATE CONVERSION COATING ELECTROSTATICALLY APPLIED THERMALLY BONDED POLYESTER POWDER COATING MINIMUM FILM THICKNESS 2.5 mils

POSTS: 51mm x 51mm (2"x2"), 14 OR 16GA.

POST CAPS: PYRAMID, BALL, SPIRE OR ACORN

RAILS: 25mm x 25mm (1" x 1"), 14GA.

UPRIGHTS: 25mm x 25mm (1" x 1"), 16GA.

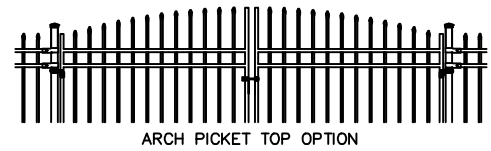
PICKETS: 12.5mm x 12.5mm (1/2" x 1/2"), 18GA. PINCHED ARROW OR FLAT TOP c/w UV INSERT (USE ARROW UNLESS OTHERWISE NOTED)

WELDS: STAINLESS STEEL

COLOUR: STANDARD COLOURS ARE BLACK, SEMI-BLACK BROWN, GREEN, WHITE AND FOREST GREEN (CUSTOM COLOURS AVAILABLE UPON REQUEST)

AVAILABLE GATE HEIGHTS:

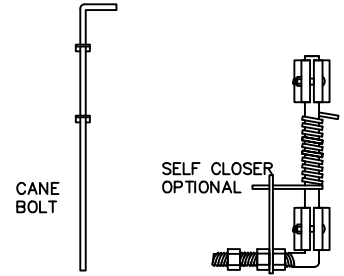
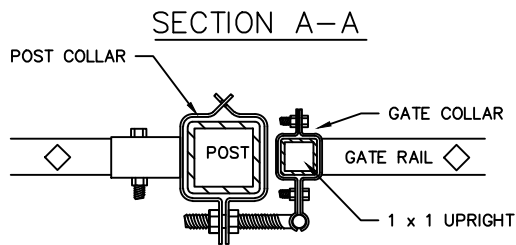
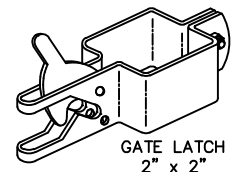
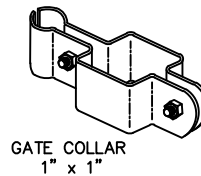
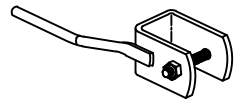
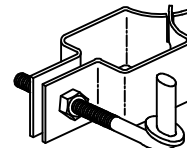
- 762mm (30")
- 914mm (36")
- 1067mm (42")
- 1219mm (48")
- 1524mm (60") SHOWN
- 1829mm (72")



FITTINGS

POST COLLAR c/w 1/2"x3" HINGE BOLT

GATE FINGER 1" x 1"



COMMENTS: DOUBLE SWING GATE



TITLE
IRON EAGLE TRADITIONAL
AMERICAN TRADITIONAL DOUBLE SWING GATE

DRAWING No.
ATDG